

## MIIM™

### Advanced Physical Layer Management

#### What we do

For over 30 years Molex has manufactured comprehensive copper and optical fibre data transport solutions for the transmission of voice, data and imaging signals

#### Peace of mind

MIIM is covered by a Global 25 Year Product, System Performance and Application Assurance Warranty. For further warranty information, please contact customer services.

#### Standards Compliance

TIA/EIA 568-B.2-1  
ISO/IEC 11801:2002  
AS/NZS 3080:2002  
EN 50173:2007



## MIIM™ – the new way to network your business

In today's busy corporate environment, the success of any business is dependent on the IT department's ability to provide reliable connectivity of critical network elements for their users. In financial terms, millions are spent annually on tools that enable the IT manager to monitor the status of the network, manage network elements, plan and execute work orders, and trouble-shoot problems. But few of these tools actually address the issues of the physical plant – the network that extends from the switch in the data centre or telecoms room through to the horizontal plant to the work area outlet. Typically, they address only a small portion of the physical layer such as asset record keeping or work order lists and have 'smart patching' capabilities but generally their integration with commonly-used network management tools is poor. This leaves the IT department with the task of having to work with separate systems that together give a poor overall view of the state of the physical plant.

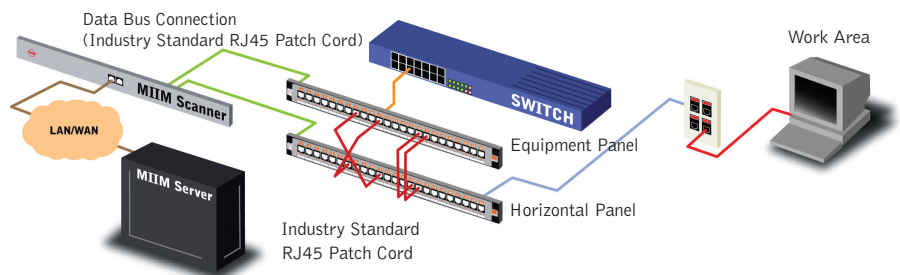
The Molex MIIM solution provides the most comprehensive Physical Layer Management System.

#### What does the MIIM Solution do?

- Continuously monitors & maps the physical layer including the cable plant and attached switch and network devices
- Verifies the continuity of the horizontal cable to the work area outlet, detects broken connections, and isolates faults due to patching in the transmission room, breaks in the horizontal cable, or disconnects of the patch between the work area outlet and the end user's PC
- Compares the as-deployed elements of the network against the as-designed intent, and highlights deviations
- Continuously monitors the presence of devices connected to work area outlets, even if the device is powered off. Alerts can be configured to notify appropriate personnel in case of unauthorised disconnects or attempts to connect to the network
- Event-driven polling of attached devices gives constant up-to-date information on all devices connected to all outlets - MIIM always know what's connected where
- Facilitates work order management, including scheduling and recording of moves, adds and changes (MACs), and verification that work orders are performed correctly
- Enables patch guidance for technicians, with LEDs on the patch panels to indicate ports with pending work orders

### MIIM - a simple, network enhancing solution too good to miss

MIIM has been designed from the ground up with the goal of keeping it simple – simple to engineer, simple to install, and simple to operate. With no need for special patch cords, special Input/Output cables, or LCD display screens, and out-of-the-box integration with other network management tools, the cost for deploying MIIM is significantly less than the "smart patching" systems on the market today.



#### Key User Benefits

##### Enhanced Network Management

Enables remote management of end-to-end connectivity and network-attached devices  
Improved asset utilisation – accurate & real time visibility of the physical layer and associated devices  
Smart polling – targeted discovery of network devices

##### Enhanced Network Security

Intrusion detection (rogue devices)  
Detects unauthorised asset changes – even if device is turned off

##### Complete Physical Layer Management

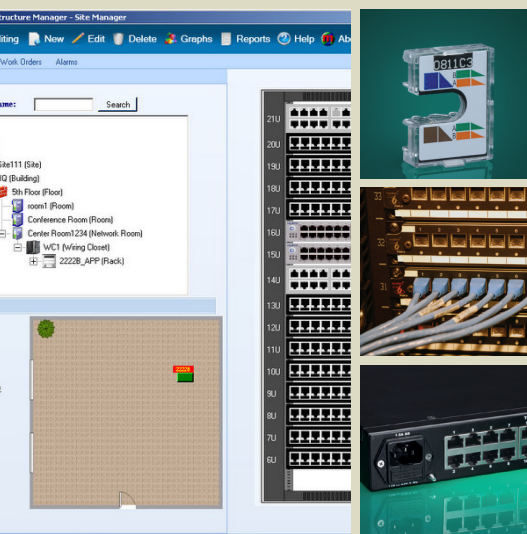
Continous monitoring of the physical layer from the telecoms room to the work area

##### Improved Productivity

More efficient MAC & work order management  
Less Downtime – through faster troubleshooting  
Guided patching – eliminates human error

##### Simple Implementation & Management

Uses Industry standard patch cords  
Valuable management reports available



# MIIM™ – the new way to network your business

The MIIM solution is comprised of the following elements:

## MIIM Application Software

A client-server based software programme providing the IT Manager with instant information on all the MIIM enabled channels on the network.

- Hierarchical view of the whole enterprise layer 1 infrastructure to the port/outlet
- Scalable with no maximum limit
- Unlimited number of users
- Search feature for easy location of assets & information
- Layer 1 assets linked to building maps
- Open system architecture enables integration with other network management software

## MIIM Scanner

1U scanner that monitors 576 physical channels (up to forty-eight 24-port patch panels in a cross-connect environment) via a Data Bus connection to each MIIM Patch Panel.

- High density scanner requires minimal space
- Low power consumption – no special fans or cooling required
- Automatic discovery/re-synchronisation in the event of a power outage
- Scanner can be tested & activated independently of software

## MIIM Category 6 24 Port Patch Panel

1U, 24 Port Category 6 UTP Patch Panel. Connection to the MIIM scanner via standard RJ45 patch cords, which acts as the Data Bus connection.

- 1U, 24 Port Category 6 UTP Patch Panel
- Two power status indicators to ensure proper connection of power supply from the scanner
- Integral cable management ensures bend radius management
- International hardware kits contains ANSI & metric hardware
- 568A/B Wiring

## MIIM Outlet Terminator

This is an optional component of the MIIM solution that is located at the work area outlet. It enables the system to monitor the integrity of the horizontal cable to the outlet when there is no attached device (spare channels)

## MIIM™

### Advanced Physical Layer Management

#### Americas

Corporate Headquarters  
+1 630 969 4550

#### Asia Pacific

Australia  
+61 3 9971 7111  
China  
+86 21 5048 0889  
India  
+91 80 4129 3500

#### EMEA

United Kingdom  
+44 (0)1489 572 111  
Czech Republic  
+420 222 191 418  
Poland  
+48 22 333 81 50  
Russia  
+7 495 642 64 55  
Ukraine  
+38 (044) 494 2642  
Middle East  
+971 4 288 7573  
South Africa  
+27 11 807 2577

## MIIM - Ordering Information

Order Number	SAP	Description
IMS-00100	183240000	MIIM 576 Channels, 1U Scanner
IMA-00100	183250001	MIIM Application Software – 576 Channels
PID-00221	183200000	MIIM, category 6 UTP 1U, 24 Port Patch Panel 568A/B
IMT-00100	183220000	MIIM Outlet Terminator (Pack of 24)
IMM-00100	183250000	Software Maintenance

In addition, standard patch cords are required for the Data Bus Termination from the MIIM Patch Panel to the MIIM Scanner. One Patch cord is required for each MIIM patch Panel to MIIM Scanner link. We recommend the use of Category 5 (or better) UTP patch cords for this purpose.

